

**VALLEY SPRINGS  
STATE ROUTE 12/26  
INTERSECTION IMPROVEMENTS**



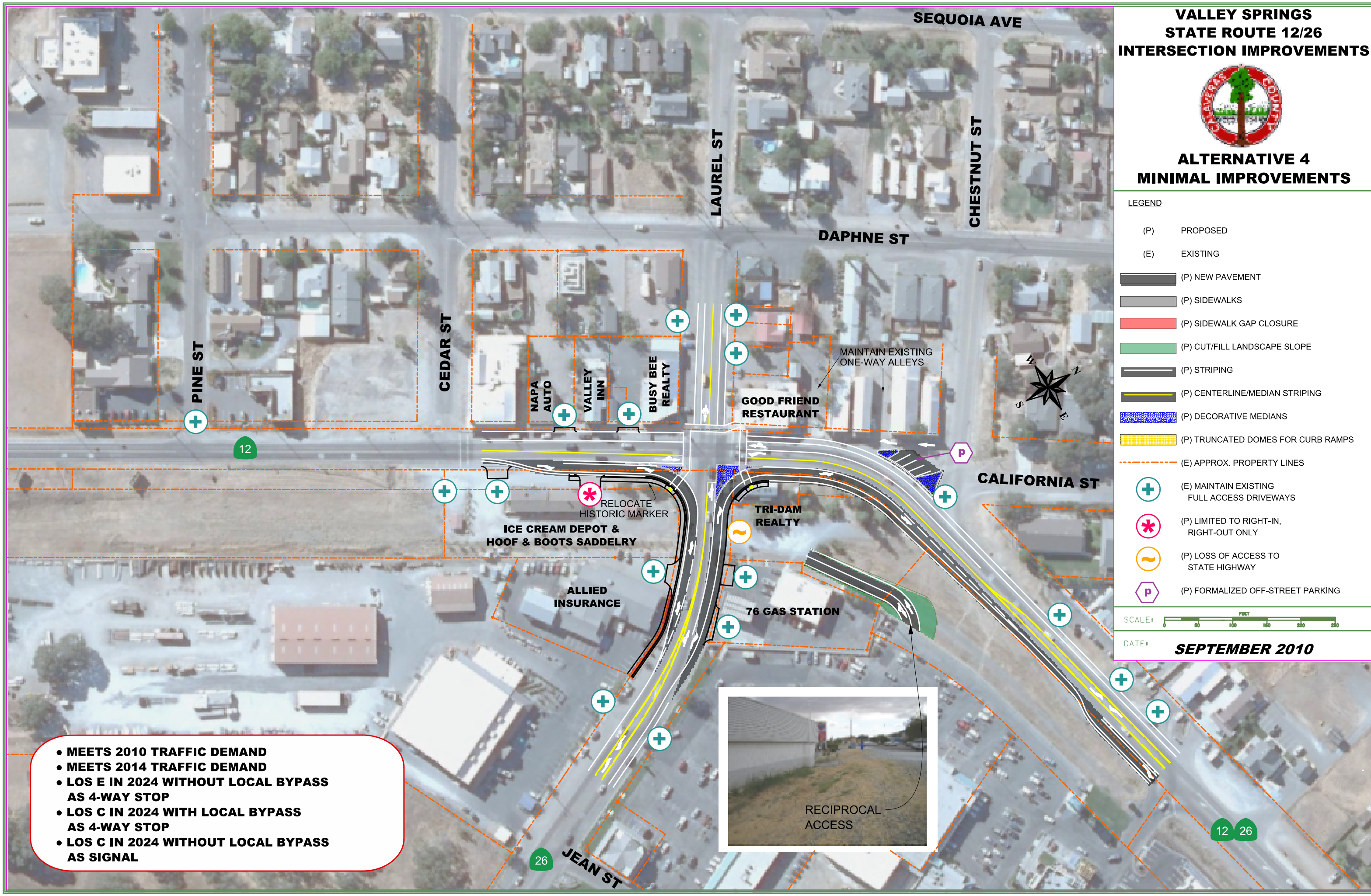
**ALTERNATIVE 4  
MINIMAL IMPROVEMENTS**

**LEGEND**

- (P) PROPOSED
- (E) EXISTING
- (P) NEW PAVEMENT
- (P) SIDEWALKS
- (P) SIDEWALK GAP CLOSURE
- (P) CUT/FILL LANDSCAPE SLOPE
- (P) STRIPING
- (P) CENTERLINE/MEDIAN STRIPING
- (P) DECORATIVE MEDIANS
- (P) TRUNCATED DOMES FOR CURB RAMPS
- (E) APPROX. PROPERTY LINES
- (E) MAINTAIN EXISTING FULL ACCESS DRIVEWAYS
- (P) LIMITED TO RIGHT-IN, RIGHT-OUT ONLY
- (P) LOSS OF ACCESS TO STATE HIGHWAY
- (P) FORMALIZED OFF-STREET PARKING



DATE: **SEPTEMBER 2010**



- MEETS 2010 TRAFFIC DEMAND
- MEETS 2014 TRAFFIC DEMAND
- LOS E IN 2024 WITHOUT LOCAL BYPASS AS 4-WAY STOP
- LOS C IN 2024 WITH LOCAL BYPASS AS 4-WAY STOP
- LOS C IN 2024 WITHOUT LOCAL BYPASS AS SIGNAL



12 26